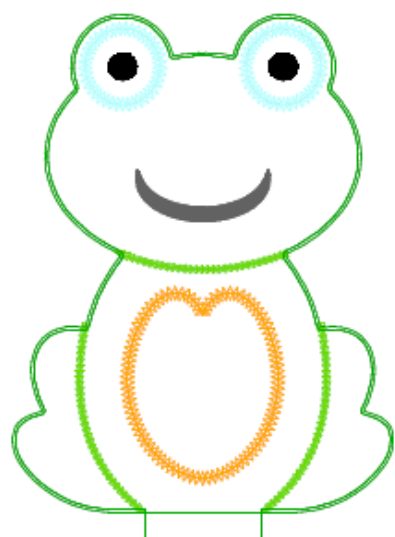


# FLIPPER the FROG in-the-hoop toy softie©

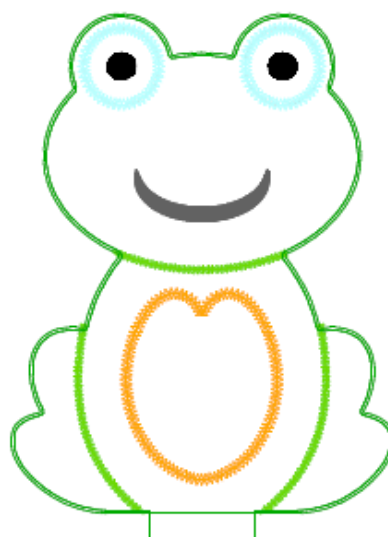
by GG Designs Embroidery  
Stitch count and colour chart



- 1. Moss Green
- 2. White
- 3. Gray
- 4. Dark Gray
- 5. Light Blue
- 6. Black
- 7. Dark Gray
- 8. White
- 9. Gray
- 10. Tangerine
- 11. Lime Green
- 12. Moss Green

**Frog 5x7.pes**

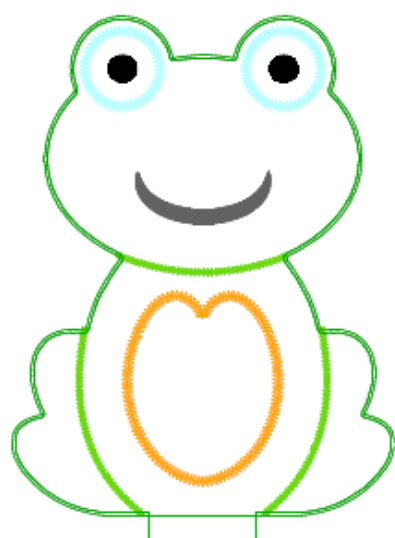
129.40x179.00 mm; 6,471 stitches  
12 thread changes; 8 colors



- 1. Moss Green
- 2. White
- 3. Gray
- 4. Dark Gray
- 5. Light Blue
- 6. Black
- 7. Dark Gray
- 8. White
- 9. Gray
- 10. Tangerine
- 11. Lime Green
- 12. Moss Green

**Frog 6x10.pes**

159.40x220.50 mm; 8,078 stitches  
12 thread changes; 8 colors



- 1. Moss Green
- 2. White
- 3. Gray
- 4. Dark Gray
- 5. Light Blue
- 6. Black
- 7. Dark Gray
- 8. White
- 9. Gray
- 10. Tangerine
- 11. Lime Green
- 12. Moss Green

**Frog 7x12.pes**

179.40x248.00 mm; 9,153 stitches  
12 thread changes; 8 colors